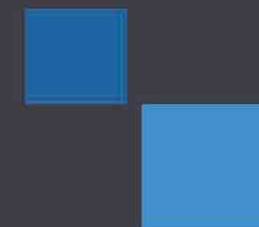




Adresse: 201, West block 1, Shunheda Industrial park, Liuxiandong,
Nanshan District, Shenzhen 518057, P.R.China
Tel: +86 755 27788593/26509551
Web: www.ousent.com
E-mail: sales@ousent.com

Transceiver Catalog



Update in 2018
Free Product Guide for Your Network

成立于2003年的深圳市欧深特信息技术有限公司，集设计、生产、销售为一体，致力于电信、数据传输通信，存储网络以及数据中心等应用领域。

公司秉承“责任、价值、关爱”的经营理念，坚持“品质为先，精益管理，持续改善”的质量方针，拥有优良的生产设施以及专业的研发团队，在光通信领域建立了属于自己的“OS”品牌，产品包括：光纤有源模块、光纤无源设备、光纤设备、光纤智能控制系统，如SFP, SFP+, XFP, X2, XENPAK, 光纤收发器，WDM MUX / DEMUX等通过了ISO体系认证，产品通过了FCC、CB、CE、UL、ROHS等测试认证。

十余年的市场积累与技术沉淀，我们活跃于电信运营商、企业数据中心、通讯设备厂商、集成商等各个领域，并在全球30多个国家和地区的众多客户中树立了良好的口碑。

背负着使客户的价值最大化的使命，欧深特坚定不移朝着成为通讯行业领导型公司的方向前进，始终为客户提供一流的产品和服务，并期待与您的真诚合作，共同发展。

Established in 2003, Ousent Technologies Co.Ltd is a fast growing company that specialized in researching, developing, manufacturing and distributing, we are dedicated in the business scope of Telecom, data communication, SAN and Data Center.

Adhering to the business philosophy of responsibility, value care, and insist on the quality policy of quality first, lean management and continuous improvement, we have our own full line of excellent production facilities and professional R&D team, also we have established our own brand of OS in optical communication industry. The products include fiber optical transceivers (SFP, SFP+, XFP, X2, XENPAK), passive modules(WDM MUX / DEMUX), optical equipment and fiber optical intelligent controlling system. All Ousent products are manufactured under ISO standard, FCC, CB, CE, UL and RoHS compliance to ensure the quality of products.

For decade of experience on the marketing sales and technology, we are active in varies of areas, such as telecom operators, enterprise data center, telecom equipment manufacturers and integrators. Therefore, we have built a good reputation with our customers over 30 countries and regions.

In order to maximize our customer's value, Ousent moves forward consistently to become the leading company in optical communication industry. We keep on supplying the top products and services to our customers all the time, and look forward to cooperating with you together, expect the win-win business.

Overview

- 1 100G Transceivers | P3
- 2 40G Transceivers | P6
- 3 SFP+ Transceivers | P10
- 4 SFP Transceivers | P12
- 5 CSFP Transceivers | P15
- 6 XFP Transceivers | P16
- 7 X2 /XENPK Transceivers | P18
- 8 Copper | P19
- 9 Others | P21



Development Trend

With the rapid development of the large data market, the large demand of backbone, access network and data center to optical fiber components has brought a new opportunity to the fiber module market. In 2011, the global optical fiber module sales were only \$30.5 billion, in 2015, more than \$46.2 billion, close to 10.94% growth. In the next 5 years, the growth of the world will reach 8.6%, and by 2020, the global sales will reach \$71 billion.

Integrated optical chips, optical devices, optical modules, subsystem industry chain, to provide solutions for the overall optical communication products.

With raising of the optical transmission, optical access, data center, consumer photoelectron market, and establishing a sales network covering the global market.

It has become the mainstream supplier of data center, cloud computing and Internet of things, and has become a world-renowned brand of optical communications based on China.



Technical certification



Product Compatibility Testing Platform

It can be compatible with source code, and has a set of switch testing system and core compatible code, which can be customized according to customer requirements.



Service



Global services
Help you find the best transceiver according to your practical demands and compatibility options.



Production
Strick production process and quality management system to confirm parts can be produced well in time

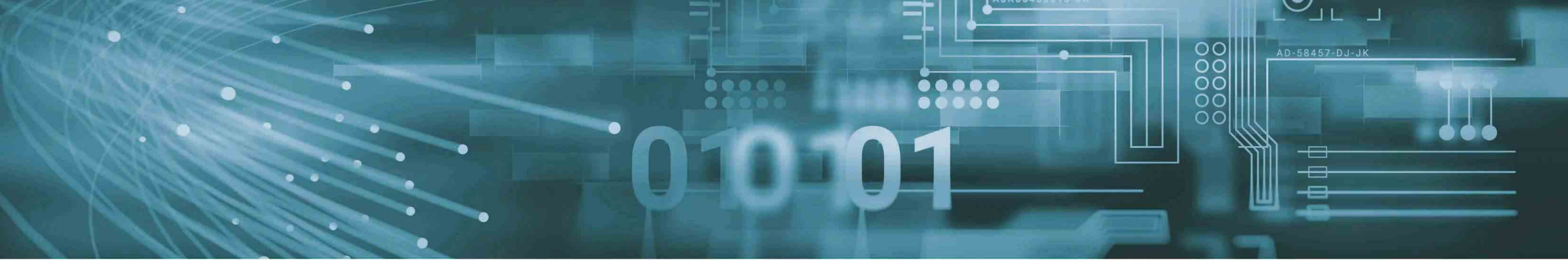


Same-day shipping
Same-day shipping to Europe, USA and Canada to ensure customers' satisfaction.



100G QSFP28

1		<p>100GBASE-LR4 Supports 100 GbE data rate: 103.125Gb/s Up to 10 km transmission on SMF QSFP28 MSA package with duplex LC connector, Pull tab latch is available</p>		<p>100GBASE-CWDM4 Designed to transmit 100G signals using four CWDM wavelengths up to 2km over SMF with duplex LC connectors.</p>	5
2		<p>100GBASE-SR4 InfiniBand EDR SFF 8665 and 8661 IEEE 802.3bm 100GBASE SR-4</p>		<p>100G QSFP28 AOC 100G QSFP28 AOC is four-channel pluggable cable.They are a high performance module for short range data communication and interconnect applications.</p>	6
3		<p>100GBASE-ER4 Operate over single mode fiber system using four 25Gbps channel in 1310nm, based on two LC connectors up to 40km.</p>		<p>100G QSFP28 DAC Suitable for very short links and offer a cost-effective way to establish a 100-Gigabit link between QSFP-100G ports and switches with in racks and across adjacent racks.</p>	7
4		<p>100GBASE-PSM4 Supports link lengths of to 500 meters over SMF with MPO connectors.</p>			



QSFP28 Transceiver Specification

Ousent Part#	Data Rate	Wavelength	Optical Components	Fiber Type	Connector	Distance
OS-QS1H-8501MD	103Gbps	850nm	VCSEL	MM	MPO	100m
OS-QS1H-3110D	103Gbps	CWDM	MDL	SM	2xLC	10km
OS-QS1H-3110DE	112Gbps	CWDM	EML	SM	2xLC	10km
OS-QS40-3120D	112Gbps	CWDM	EML	SM	2xLC	20km
OS-QS40-3140D	103Gbps	CWDM	EML	SM	2xLC	40km

QSFP28 DAC Specification

Ousent Part#	Data Rate	AWG	Passive/Active	Fiber Type	Connector	Distance
OS-QS1H-M1	100Gbps	30	Passive	#	clabe	1m
OS-QS1H-M2	100Gbps	30	Passive	#	clabe	2m
OS-QS1H-M3	100Gbps	30	Passive	#	clabe	3m
OS-QS1H-AM2	100Gbps	30	Active	#	clabe	2m
OS-QS1H-AM3	100Gbps	30	Active	#	clabe	3m

QSFP28 AOC Specification

Ousent Part#	Data Rate	Wavelength	Source	Fiber Type	Connector	Distance
OS-AO1H-M1D	100Gbps	850nm	VCSEL/PIN	MMF	Clabe	1m
OS-AO1H-M2D	100Gbps	850nm	VCSEL/PIN	MMF	Clabe	2m
OS-AO1H-M5D	100Gbps	850nm	VCSEL/PIN	MMF	Clabe	5m

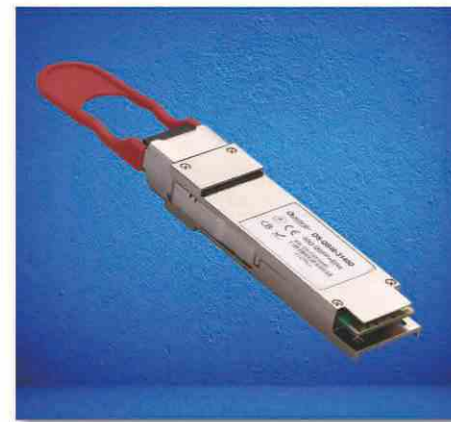
Notes:
Every transceiver is individually tested on corresponding equipment such as Cisco, Arista, Juniper, Dell, Brocade and other brands, passed the monitoring of Fiberstore' s intelligent quality control system.

40G QSFP+



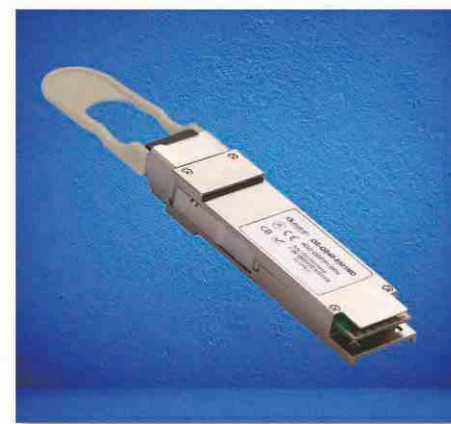
40GBASE-LR4

Compliant to the QSFP+ MSA SFF-8436 Specification, Up to 10km over SMF, DFB and PIN monitor photodiodes array for transmitter section.



40GBASE-ER4

Compliant to the IEEE 802.3ba(40GBASE-ER4), Compliant to the QSFP+ MSA SFF-8436 Specification, Up to 40km over SMF.



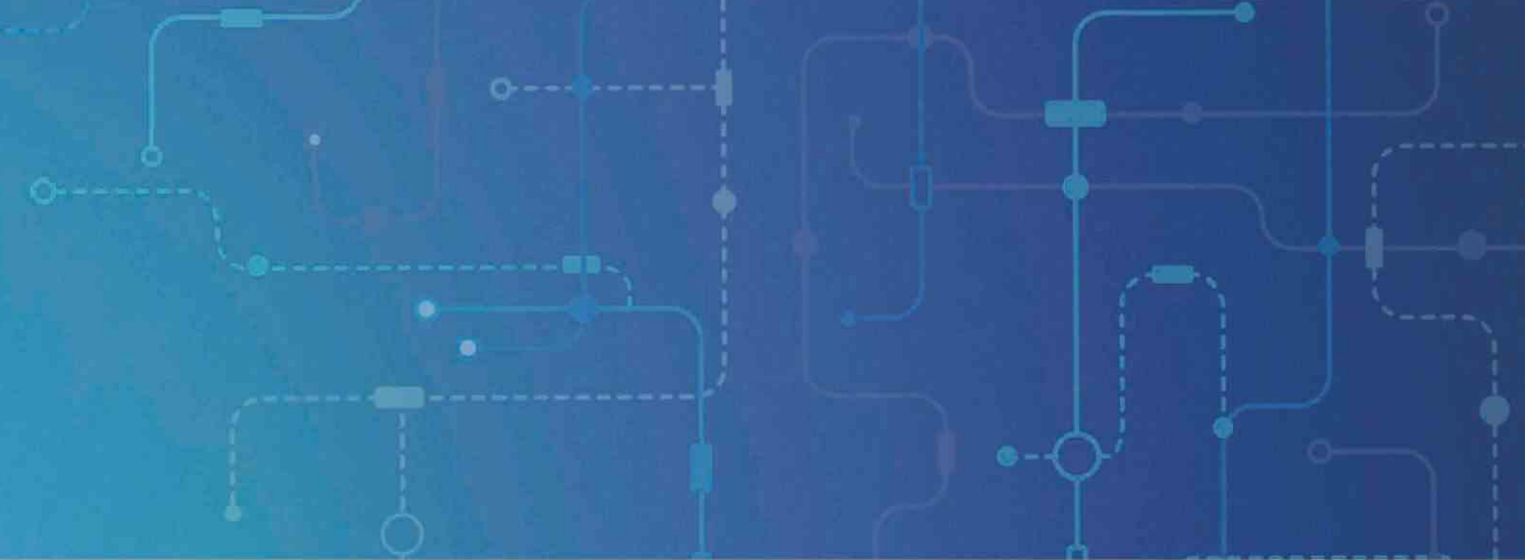
40GBASE-SR4/CSR4

Compliant to the QSFP+ MSA SFF-8436Specification, Up to 100m on OM3 and 150m on OM4 MMF,VCSEL array transmitter and PIN array receiver



40G Solution

High Performance Computing(HPC) applications



40G CFP-LR4

CWDM DFB laser and PIN receiver
Up to 20km transmission on SMF
Hot-Pluggable CFP Footprint Duplex LC Connector Interface



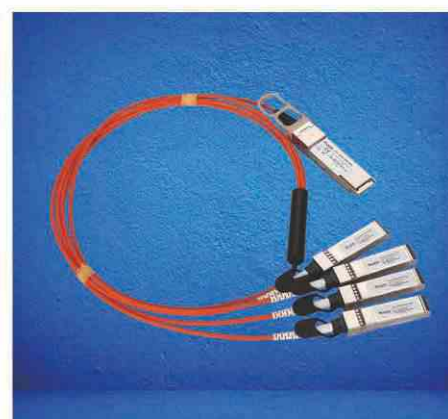
40G QSFP+ AOC

Active Optical Cables Length up to 100m
VCSEL array transmitter and PIN array receiver
Infiniband 4XQDR/40G Base-SR10 Compliant Laser Class 1



40G CFP-ER4

Supports 41Gbps aggregate bit rates
DWDM EML laser and ADP receiver
Single 3.3V Power Supply and Power dissipation <8W
Up to 80km transmission on SMF



40G QSFP+ to 4 SFP+ AOC

Electrical interface compliant to QSFP+ connector (SFF-8436) and SFP+ connectors (SFF-8431)
Maximum aggregate data rate: 40 Gb/s (4 x 10Gb/s)



40G QSFP+ DAC

4-Channel Full-Duplex Passive Copper Cable Transceiver
Support for multi-gigabit data rates:
1.0 Gbps - 10.3125Gbps (per channel)
Copper link length up to 15m (Active limiting)



40G QSFP+ to 4 SFP+ DAC

Hybrid cable conforms to the Small Form Factor SFF-8436 and SFF-8431
Support for multi-gigabit data rates :
1 Gb/s - 10 Gb/s (per channel)
Maximum aggregate data rate: 40 Gb/s (4 x 10Gb/s)

10G SFP+

10G SFP+ including SR, LR, ER, ZR, CWDM, DWDM and BIDI series



40G QSFP+ Transceiver Specification

Ousent Part#	Data Rate	Wavelength	Optical Components	Fiber Type	Connector	Distance
OS-QS40-8501MD	40Gbps	850nm	VCSEL/PIN	MMF	MPO/MTP	100m
OS-QS40-3110D	40Gbps	CWDM	DFB/PIN	SMF	LC/LC	10km
OS-QS40-3120D	40Gbps	CWDM	DFB/PIN	SMF	LC/LC	20km
OS-QS40-3140D	40Gbps	CWDM	DFB/PIN	SMF	LC/LC	40km

40G CFP Transceiver Specification

Ousent Part#	Data Rate	Wavelength	Source	Media Type	Connector	Distance
OS-CF40-3110D	40Gbps	1270nm~1330nm	DFB/PIN	SMF	45° LC	10km
OS-CF40-3120D	40Gbps	1270nm~1330nm	DFB/PIN	SMF	45° LC	20km
OS-CF40-3140D	40Gbps	1270nm~1330nm	DFB/APD	SMF	45° LC	40km

40G QSFP+ DAC & AOC Transceiver Specification

Ousent Part#	Data Rate	Wavelength	Optical Components	Fiber Type	Connector	Distance
OS-AO40-85xxMD	40Gbps	850nm	VCSEL/PIN	MMF	AOC	1m to 100m
OS-AO4X-85xxMD	40Gbps	850nm	VCSEL/PIN	MMF	AOC	1m to 100m
OS-QS40-xxC	40Gbps	#	#	#	Copper	1m to 7m
OS-QS40-AxxC	40Gbps	#	#	#	Copper	1m to 15m
OS-QS4X-xxC	40Gbps	#	#	#	Copper	1m to 7m
OS-QS4X-AxxC	40Gbps	#	#	#	Copper	1m to 15m

Notes: the temperature range of the 40G QSFP+ is -5°C To+75°C

SFP+

- Available in all C-Band Wavelengths on the 100GHz DWDM ITU Grid
- Temperature-Stabilized DWDM EML Transmitter
- Hot-Pluggable SFP+ Footprint and Duplex LC Connector
- Power Dissipation <1.5W
- Dispersion tolerance from -300ps/nm to 800ps/nm
- Temperature Range:0°C ~+70°C
- Compliant with SFF-8431/8432 MSA



10G SFP+ DAC & AOC Transceiver Specification

Ousent Part#	Data Rate	Wavelength	Optical Components	Case Temperature range	Connector	Distance
OS-SP96-M0.5C	10Gbps	#	#	Com.	Copper	0.5m
OS-SP96-M5C	10Gbps	#	#	Com.	Copper	5m
OS-SP96-M7C	10Gbps	#	#	Com.	Copper	7m
OS-AO96-85M1D	10Gbps	850nm	VCSEL/PIN	Com.	Copper	1m
OS-AO96-85M3D	10Gbps	850nm	VCSEL/PIN	Com.	Copper	3m
OS-AO96-85M15D	10Gbps	850nm	VCSEL/PIN	Com.	Copper	15m

Notes: the temperature range of the 10G SFP+ is 0°C To+70°C



DWDM SFP+

Realize long distance Transmission easily

10G SFP+ Transceiver Specification

Ousent Part#	Data Rate	Wavelength	Source	Media Type	Connector	Distance
OS-SP96-8503MD	10Gbps	850nm	VCSEL	MMF	LC	300m
OS-SP96-3102MD	10Gbps	1310nm	FP	MMF	LC	220m
OS-SP96-3110D	10Gbps	1310nm	DFB	SMF	LC	10km
OS-SP96-3120D	10Gbps	1310nm	DFB	SMF	LC	20km
OS-SP96-3140D	10Gbps	1310nm	DFB	SMF	LC	40km
OS-SP96-3170D	10Gbps	1311nm	DFB	SMF	LC	70km
OS-SP96-5540D	10Gbps	1550nm	EML	SMF	LC	40km
OS-SP96-5580D	10Gbps	1550nm	EML	SMF	LC	80km
OS-SP96-B3710D	10Gbps	TX1330/RX1270nm	DFB	SMF	LC	10km
OS-SP96-B7310D	10Gbps	TX1270/RX1330nm	DFB	SMF	LC	10km
OS-SP96-B3720D	10Gbps	TX1330/RX1270nm	DFB	SMF	LC	20km
OS-SP96-B7320D	10Gbps	TX1270/RX1330nm	DFB	SMF	LC	20km
OS-SP96-B3740D	10Gbps	TX1330/RX1270nm	DFB	SMF	LC	40km
OS-SP96-B7340D	10Gbps	TX1270/RX1330nm	DFB	SMF	LC	40km
OS-SP96-B3760D	10Gbps	TX1330/RX1270nm	DFB	SMF	LC	60km
OS-SP96-B7360D	10Gbps	TX1270/RX1330nm	DFB	SMF	LC	60km
OS-SP96-CXX10D	10Gbps	1270~1610nm	DFB	SMF	LC	10km
OS-SP96-CXX14D	10Gbps	1270~1330nm 1470~1610nm	DFB	SMF	LC	40km
OS-SP96-DXX40D	10Gbps	#	EML	SMF	LC	40km
OS-SP96-DXX80D	10Gbps	#	EML	SMF	LC	80km

Notes: the temperature range of the 10G SFP+ is 0°C~+70°C and Industrial -40°C~+85°C

SFP Transceiver

Ousent SFP is a standard for transceivers, commonly used with Fast Ethernet, Gigabit Ethernet, 1/2/4 fibre channel and SDH/SONET. By offering a standard, hot swappable electrical interface, it can support a wide range of physical media, from copper to long-wave single-mode optical fiber, at lengths of hundreds of kilometers.

- 155M/1.25G/2.5G/4.25G SFP
- BIDI SFP(20/40/80/120km)
- SFP-T(10/100, 10/100/1000, 1000Base-T)
- CWDM SFP(1270-1610nm 19/24/32/37dB)
- DWDM SFP(1528.77-1563.86nm)



SFP Transceiver Specification

Ousent Part#	Data Rate	Wavelength	Source	Media Type	Connector	Distance
OS-SP12-8505MD	1.25Gbps	850nm	VCSEL/PIN	MMF	LC	550m
OS-SP12-312LMD	1.25Gbps	1310nm	FD+PIN	SMF	LC	2km
OS-SP12-3110D	1.25Gbps	1310nm	FD+PIN	SMF	LC	10km
OS-SP24-8501MD	2.5Gbps	850nm	VCSEL/PIN	MMF	LC	100m
OS-SP24-3140D	2.5Gbps	1550nm	DFB+PIN	SMF	LC	40km
OS-SP24-551BD	2.5Gbps	1550nm	DFB+APD	SMF	LC	120km
OS-SP42-8501MD	4.25Gbps	850nm	VCSEL/PIN	MMF	LC	100m
OS-SP42-5540D	4.25Gbps	1550nm	DFB+PIN	SMF	LC	40km
OS-SP42-5580D	4.25Gbps	1550nm	DFB+APD	SMF	LC	80km

Notes: the temperature range of the 1.25G/2.5G/4.25G SFP is 0°C~+70°C and Industrial -40°C~+85°C



BIDI SFP Transceiver Specification

Ousent Part#	Data Rate	Wavelength	Source	Media Type	Connector	Distance
OS-SP12-B532LMD	1.25Gbps	Tx1550/Rx1310	FD+PIN	MMF	LC	2km
OS-SP12-B5320D	1.25Gbps	Tx1550/Rx1310	DFB+PIN	SMF	LC	10~20km
OS-SP12-B5340D	1.25Gbps	Tx1550/Rx1310	DFB+PIN	SMF	LC	40km
OS-SP12-B5480D	1.25Gbps	Tx1550/Rx1490	DFB+PIN	SMF	LC	80km
OS-SP12-B541AD	1.25Gbps	Tx1550/Rx1490	DFB+APD	SMF	LC	100km
OS-SP12-B171BD	1.25Gbps	Tx1510/Rx1570	DFB+APD	SMF	LC	120km
OS-SP12-B171CD	1.25Gbps	Tx1510/Rx1570	DFB+APD	SMF	LC	160km
OS-SP24-B5303MD	2.5Gbps	Tx1550/Rx1310	FD+PIN	MMF	LC	300m
OS-SP24-B3403MD	2.5Gbps	Tx1310/Rx1490	FD+PIN	MMF	LC	300m
OS-SP24-B435LD	2.5Gbps	Tx1490/Rx1310	DFB+PIN	SMF	LC	5km
OS-SP24-B5315D	2.5Gbps	Tx1550/Rx1310	DFB+PIN	SMF	LC	15km
OS-SP24-B5440D	2.5Gbps	Tx1550/Rx1490	DFB+PIN	SMF	LC	40km
OS-SP24-B7140D	2.5Gbps	Tx1570/Rx1510	DFB+PIN	SMF	LC	40km
OS-SP24-B4B40D	2.5Gbps	Tx1490/Rx Bandwidth	DFB+PIN	SMF	LC	40km
OS-SP42-B5303MD	4.25Gbps	Tx1550/Rx1310	FD+PIN	MMF	LC	300m
OS-SP42-B535LD	4.25Gbps	Tx1550/Rx1310	DFB+PIN	SMF	LC	5km
OS-SP42-B345LD	4.25Gbps	Tx1310/Rx1490	FD+PIN	SMF	LC	5km
OS-SP42-B3415D	4.25Gbps	Tx1310/Rx1490	DFB+PIN	SMF	LC	15km
OS-SP42-B7140D	4.25Gbps	Tx1570/Rx1510	DFB+PIN	SMF	LC	40km
OS-SP42-R4980D	4.25Gbps	Tx1490/Rx Bandwidth	#	SMF	LC	80km

Notes: the temperature range of the 1.25G/2.5G/4.25G SFP is 0°C~+70°C and Industrial -40°C~+85°C

CWDM SFP Transceiver Specification

Ousent Part#	Data Rate	Wavelength	Source	Media Type	Connector	Distance
OS-SP12-CXX50D	1.25Gbps	CWDM1270~1370	DFB+PIN	SMF	LC	50km
OS-SP12-CXX80D	1.25Gbps	CWDM1270~1370	DFB+PIN	SMF	LC	80km
OS-SP12-CXX1AD	1.25Gbps	CWDM1270~1370	DFB+PIN	SMF	LC	100km
OS-SP12-CXX1BD	1.25Gbps	CWDM1410~1610	DFB+APD	SMF	LC	120km
OS-SP24-CXX18D	2.5Gbps	CWDM1410~1610	DFB+PIN	SMF	LC	40km
OS-SP24-CXX28D	2.5Gbps	CWDM1270~1370	DFB+APD	SMF	LC	80km
OS-SP24-CXX32D	2.5Gbps	CWDM1410~1610	DFB+APD	SMF	LC	120km
OS-SP42-CXX18D	4.25Gbps	CWDM1270~1370	DFB+PIN	SMF	LC	40km
OS-SP42-CXX26D	4.25Gbps	CWDM1270~1370	DFB+APD	SMF	LC	60km
OS-SP42-CXX18D	4.25Gbps	CWDM1410~1610	#	SMF	LC	40km
OS-SP42-CXX26D	4.25Gbps	CWDM1410~1610	#	SMF	LC	80km

DWDM SFP Transceiver Specification

Ousent Part#	Data Rate	Wavelength	Source	Media Type	Connector	Distance
OS-SP12-DXX40D	1.25Gbps	ITU-GRID DWDM	DFB+PIN	SMF	LC	40km
OS-SP12-DXX80D	1.25Gbps	ITU-GRID DWDM	DFB+PIN	SMF	LC	80km
OS-SP24-DXX40D	2.5Gbps	ITU-GRID DWDM	DFB+PIN	SMF	LC	40km
OS-SP24-DXX80D	2.5Gbps	ITU-GRID DWDM	DFB+APD	SMF	LC	80km
OS-SP42-DXX40D	4.25Gbps	ITU-GRID DWDM	DFB+PIN	SMF	LC	40km
OS-SP42-DXX80D	4.25Gbps	ITU-GRID DWDM	DFB+APD	SMF	LC	80km



CSFP Transceiver

- Support up to 1.25Gbps Data Links
- Single 3.3V Power supply and TTL Logic Interface
- 2XBi-directional transceivers in 1 Compact SFP transceiver package
- Class 1 FDA and IEC60825-1 Laser Safety Compliant
- Operating Case Temperature Standard: 0°C~+70°C and Industrial -40°C~+85°C
- Compliant with CSFP MSA Option 2 or Option 1
- Compliant with Digital Diagnostic Monitor Interface SFF-8472



CSFP Transceiver Specification

Ousent Part#	Data Rate	Wavelength	Optical Components	Fiber Type	Connector	Distance
OS-CS12-B4310D	1.0625G/1.25G	1490nm/1310nm	DFB/PIN	SMF	LC	10km
OS-CS12-B3410D	1.0625G/1.25G	1310nm/1490nm	FP/PIN	SMF	LC	10km
OS-CS12-B4320D	1.0625G/1.25G	1490nm/1310nm	DFB/PIN	SMF	LC	20km
OS-CS12-B3420D	1.0625G/1.25G	1310nm/1490nm	FP/PIN	SMF	LC	20km
OS-CS12-B5310D	1.0625G/1.25G	1550nm/1310nm	DFB/PIN	SMF	LC	10km
OS-CS12-B3510D	1.0625G/1.25G	1310nm/1550nm	FP/PIN	SMF	LC	10km
OS-CS12-B5320D	1.0625G/1.25G	1550nm/1310nm	DFB/PIN	SMF	LC	20km
OS-CS12-B3520D	1.0625G/1.25G	1310nm/1550nm	FP/PIN	SMF	LC	20km

Notes:
the temperature range of the 1.0625G/1.25G CSFP is 0°C~+70°C and Industrial -40°C~+85°C

XFP Transceiver

- Supports 9.95Gb/s to 11.1Gb/s data rates
- Hot-Pluggable XFP Footprint
- Temperature-Stabilized DWDM Rated EML Transmitter
- Duplex LC Connector
- Built-in Digital Diagnostic Functions
- Support Line Side Loopback
- Support XFI Loopback



XFP Transceiver Specification

Ousent Part#	Data Rate	Wavelength	Source	Media Type	Connector	Distance
OS-XP96-B3710D	10G	TX1330/RX1270	DFB	SMF	LC	10km
OS-XP96-B7310D	10G	TX1270/RX1330	DFB	SMF	LC	10km
OS-XP96-B3720D	10G	TX1330/RX1270	DFB	SMF	LC	20km
OS-XP96-B7320D	10G	TX1270/RX1330	DFB	SMF	LC	20km
OS-XP96-B3740D	10G	TX1330/RX1270	DFB	SMF	LC	40km
OS-XP96-B7340D	10G	TX1270/RX1330	DFB	SMF	LC	40km
OS-XP96-B3760D	10G	TX1330/RX1270	DFB	SMF	LC	60km
OS-XP96-B7360D	10G	TX1270/RX1330	DFB	SMF	LC	60km

Notes:
the temperature range of the 10G XFP is 0°C~+70°C and Industrial -40°C~+85°C

XFP Transceiver Specification

Ousent Part#	Data Rate	Wavelength	Source	Media Type	Connector	Distance
OS-XP96-8503MD	10Gbps	850nm	VCSEL	MMF	LC	300m
OS-XP96-3110D	10Gbps	1310nm	DFB	SMF	LC	10km
OS-XP96-3120D	10Gbps	1310nm	DFB	SMF	LC	20km
OS-XP96-3140D	10Gbps	1310nm	DFB	SMF	LC	40km
OS-XP96-5540D	10Gbps	1550nm	EML	SMF	LC	40km
OS-XP96-5580D	10Gbps	1550nm	EML	SMF	LC	80km

CWDM XFP Transceiver Specification

Ousent Part#	Data Rate	Wavelength	Source	Media Type	Connector	Distance
OS-XP96-CXX10D	10Gbps	1270nm~1610nm	DFB	SMF	LC	10km
OS-XP96-CXX40D	10Gbps	1470nm~1610nm	DFB	SMF	LC	40km
OS-XP96-CXX80D	10Gbps	1470nm~1610nm	DFB	SMF	LC	80km
OS-XP96-CXX23D	10Gbps	1270nm~1330nm	DFB+APD	SMF	LC	23km
OS-XP96-CXX14D	10Gbps	1470nm~1610nm	EML/PIN	SMF	LC	14km
OS-XP96-CXX23D	10Gbps	1270nm~1450nm	EML/PIN	SMF	LC	23km

DWDM XFP Transceiver Specification

Ousent Part#	Data Rate	Channel	Source	Media Type	Connector	Distance
OS-XP96-DXX40D	10Gbps	CH17~61	EML	SMF	LC	40km
OS-XP96-DXX80D	10Gbps	CH17~61	EML	SMF	LC	80km

X2/XENPAK Transceiver

- 1.2V,3.3V operating voltage
- Support of IEEE802.3ae 10GBASE-SR at 10.3125Gbit/s
- Distance up to 80km
- Digital diagnostics
- XAUI electrical interface 4x3.125Gb/s Ethernet(FTLX1841E2)
- Management and control via MDIO 2-wire bus
- Separated signal/chassis ground



10G X2 Transceiver Specification

Ousent Part#	Data Rate	Wavelength	Source	Media Type	Connector	Distance
OS-X296-8503MD	10Gbps	850nm	VCSEL+PIN	SMF	SC	300m
OS-X296-3110D	10Gbps	1310nm	DFB+PIN	SMF	SC	10km
OS-X296-3102MD	10Gbps	1310nm	DFB+PIN	SMF	SC	220m
OS-X296-5540D	10Gbps	1550nm	EML+PIN	SMF	SC	40km
OS-X296-5580D	10Gbps	1550nm	EML+APD	SMF	SC	80km
OS-X2-SFP+	10Gbps	N/A	N/A	SMF	LC	0~80km
OS-X296-CXX40D	10Gbps	1470nm~1610nm	EML+PIN	SMF	SC	40km
OS-X296-CXX80D	10Gbps	1470nm~1610nm	EML+APD	SMF	SC	80km
OS-X296-DXX40D	10Gbps	DWDM	EML+PIN	SMF	SC	40km
OS-X296-DXX80D	10Gbps	DWDM	EML+APD	SMF	SC	80km

X2/XENPAK (SR/LR/LRM/ER/ZR), CWDM (1470-1610nm 10/16/23dB), DWDM (1528.77 - 1563.86nm), X2/XENPAK SFP+ Converter



10G XENPAK Transceiver Specification

Ousent Part#	Data Rate	Wavelength	Source	Media Type	Connector	Distance
OS-XN96-8503MD	10Gbps	850nm	VCSEL+PIN	MMF	SC	300m
OS-XN96-3110D	10Gbps	1310nm	DFB+PIN	SMF	SC	10km
OS-XN96-3102MD	10Gbps	1310nm	DFB+PIN	MMF	SC	220m
OS-XN96-5540D	10Gbps	1550nm	EML+PIN	SMF	SC	40km
OS-XN96-5580D	10Gbps	1550nm	EML+APD	SMF	SC	80km
OS-XENPAK-SFP+	10Gbps	N/A	N/A	N/A	LC	0~80km
OS-XN96-CXX40D	10Gbps	1470nm~1610nm	DFB+PIN	SMF	SC	40km
OS-XN96-CXX80D	10Gbps	1470nm~1610nm	DFB+PIN	SMF	SC	80km
OS-XN96-DXX40D	10Gbps	DWDM	DFB+PIN	SMF	SC	40km
OS-XN96-DXX80D	10Gbps	DWDM	DFB+PIN	SMF	SC	80km

Copper

- Support 10/100Base-T; 10/100/1000Base-T, 100Base-T, 1000Base-T
- Operation in Host Systems
- For 100m Reach over Cat 5 UTP Cable
- Hot-Pluggable SFP Footprint
- Fully metallic enclosure for low EMI
- Low power dissipation
- Compact RJ-45 connector assembly
- Detailed product information in EEPROM
- Operating Temperature: Com.0°C ~+70°C
Ind.: -40°C ~+85°C /Ext.: -20°C ~+70°C
- Compliant with IEEE Std 802.3-2002



Copper SFP Transceiver Specification

Ousent Part#	Data Rate	Wavelength	Temperature	Media Type	Connector	Distance
OS-SP01-T	10/100Mbps	#	Com.	AT6A/CAT7	RJ45	100m
OS-SP01-TC	100Mbps	#	Com.	AT6A/CAT7	RJ45	100m
OS-SP12-TC	1000Mbps	#	Com.	AT6A/CAT7	RJ45	100m
OS-SP12-TG	10/100/1000Mbps	#	Com.	AT6A/CAT7	RJ45	100m
OS-SP96-T	10Gbps	#	Com.	AT6A/CAT7	RJ45	30m

10G AOC Transceiver Specification

Ousent Part#	Description
OS-SP96-85M0.5MD	10G SFP+ AOC 0.5-meter
OS-SP96-85M1MD	10G SFP+ AOC 1-meter
OS-SP96-85M2MD	10G SFP+ AOC 2-meter

10G DAC Transceiver Specification

Ousent Part#	Description
OS-SP96-M0.5C	10G SFP+ Copper 0.5m, Twinax 30AWG cable assembly-Passive
OS-SP96-M1C	10G SFP+ Copper 1m, Twinax 30AWG cable assembly-Passive
OS-SP96-M2C	10G SFP+ Copper 2m, Twinax 30AWG cable assembly-Passive
OS-SP96-M3C	10G SFP+ Copper 3m, Twinax 30AWG cable assembly-Passive
OS-SP96-AM8C	10G SFP+ Copper 8m, Twinax 24AWG cable assembly---Active
OS-SP96-AM9C	10G SFP+ Copper 9m, Twinax 24AWG cable assembly---Active

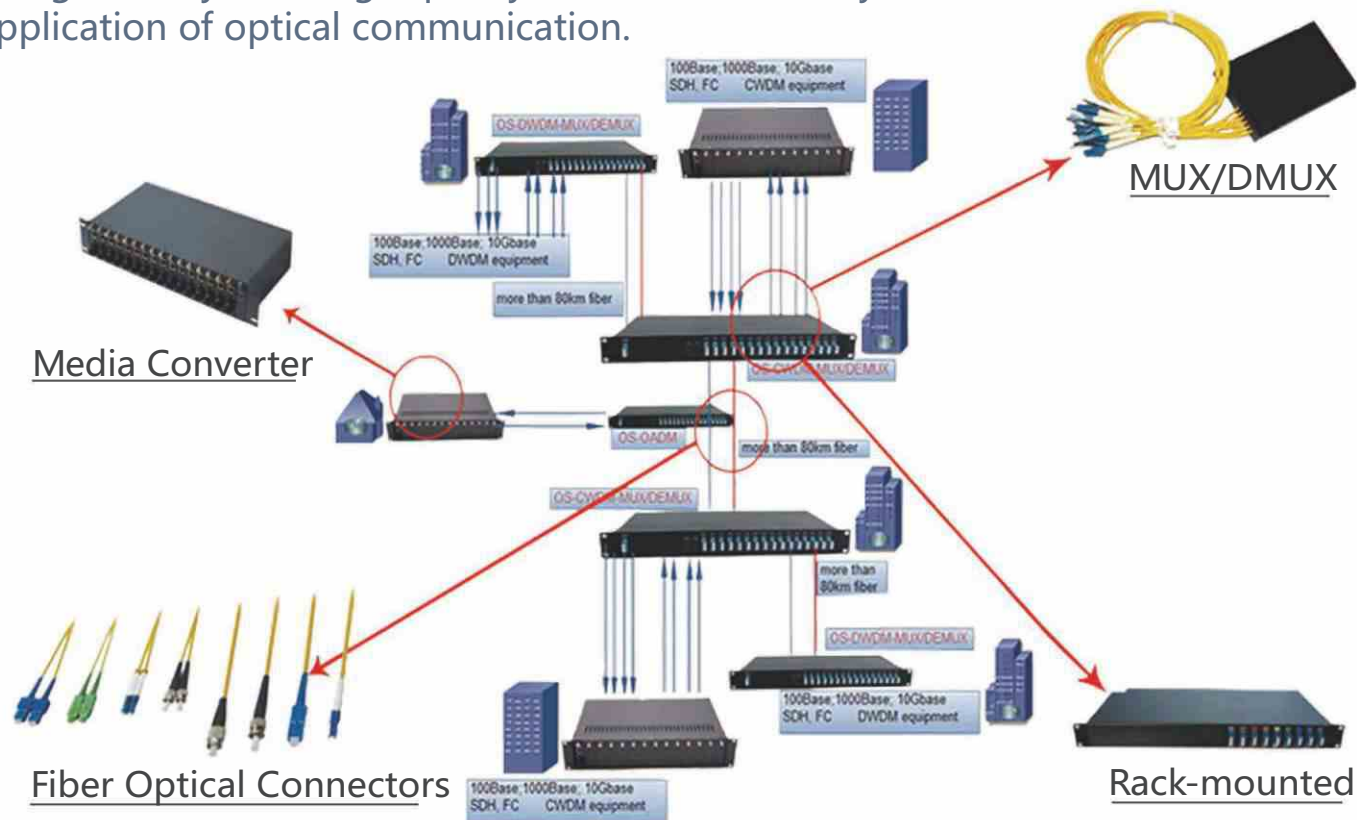


Media Converters

support many different data communication protocols

Other

Optical fiber connector (also known as jumper) terminates the end of an optical fiber and is used to join optical fibers where a connect/disconnect capability is required. The connectors mechanically couple and align the cores of fibers so the fiber faces are pressed together and light can pass. Better connectors lose very little light due to reflection or misalignment of the fibers. There are many sorts of optical fiber connectors on the market, such as FC, SC, ST, LC, MTRJ, MU, E2000, etc., with four polishing types: Flat-surface, Physical Contact(PC), Ultra Physical Contact(UPC), and Angled Physical Contact(APC). Ousent manufacturers and commercializes a wide range of optical fiber connectors which are recognized by their high quality and have been very used in the application of optical communication.



CWDM MUX/DEMUX
CWDM MUX/DEMUX
Rack-Mounted



Fiber Optical Connectors
LC/SC/FC/MPO/ST/MU...
Type:SMF/MMF(OM3/OM4)
Length:Optional



10/100M Media Converter(desktop/card type)
10/100/1000M Media Converter(desktop/card type)
100-1000M Media Converter Rack
10/100M Fiber Ethernet Switches(desktop/card type)
10/100/1000M Fiber Ethernet Switches(desktop/card type)